



Scan for a video

# 01 AIRLINK

The project was oriented towards the economic development of *Margarita Island* in Venezuela through the construction of an FBO terminal.

The project was made with the target of improving the infrastructure of the island, as to increase the passenger capacity of Margarita.

The goal was to boost the tourism, and with it increase the island's income.

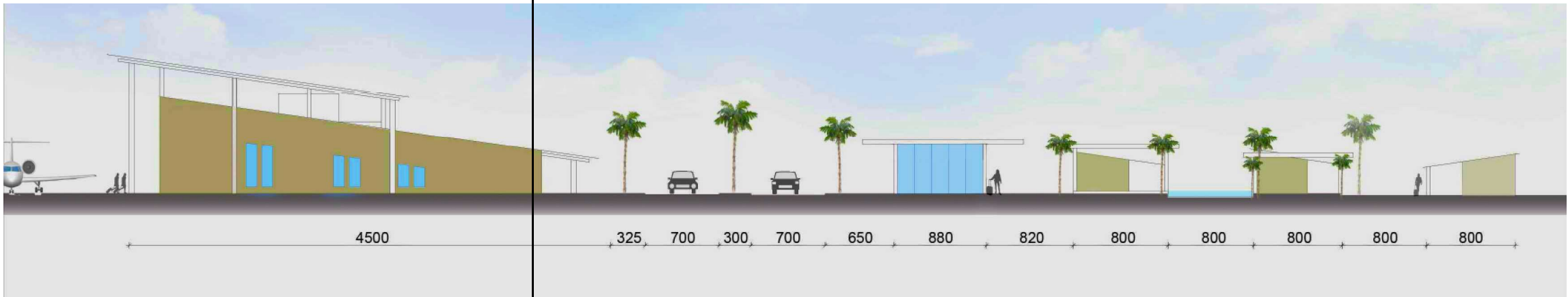
The shape was design to give the feeling of a transitional space for passengers. The shape is made as to give the feeling of taking off and landing in an airplane.

The architectural design and the use of building technologies was fundamental to achive a ZERO energy building.



This aerial view illustrates the proposed development on a triangular plot. The plot is bounded by a road to the north and a road to the east. The proposed building footprint is shown in blue, with a central yellow area indicating the main structure. The surrounding area includes existing infrastructure, such as roads and parking lots, and is landscaped with greenery and trees. The diagram shows the building's orientation relative to the surrounding urban context.

# MASTERPLAN

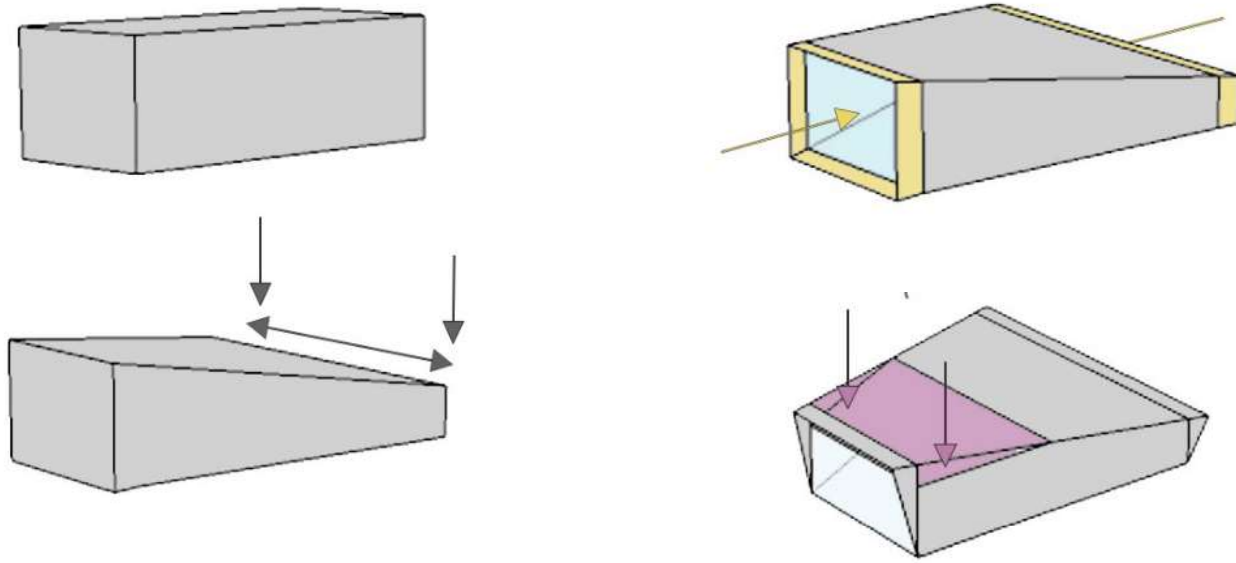








# DESIGN PROCESS



AIRSIDE: HIGHER FACADE RECALLING THE TAKE OFF.

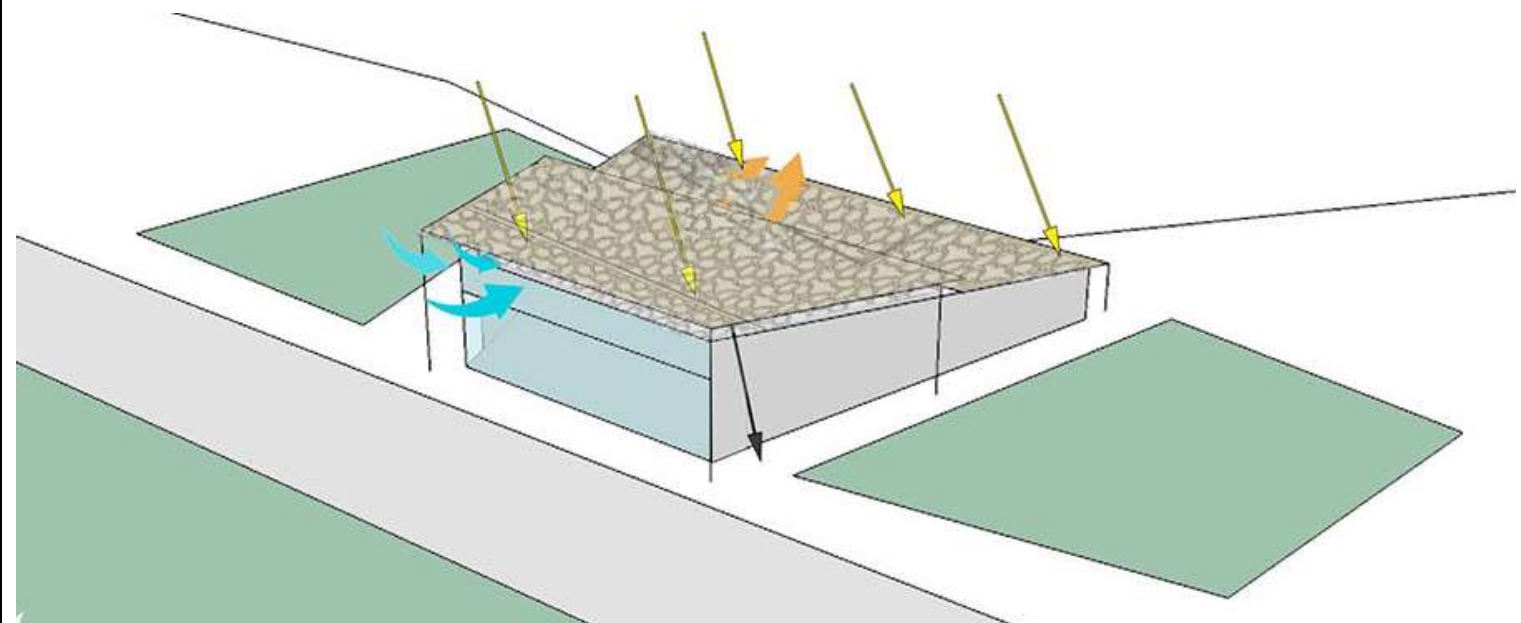
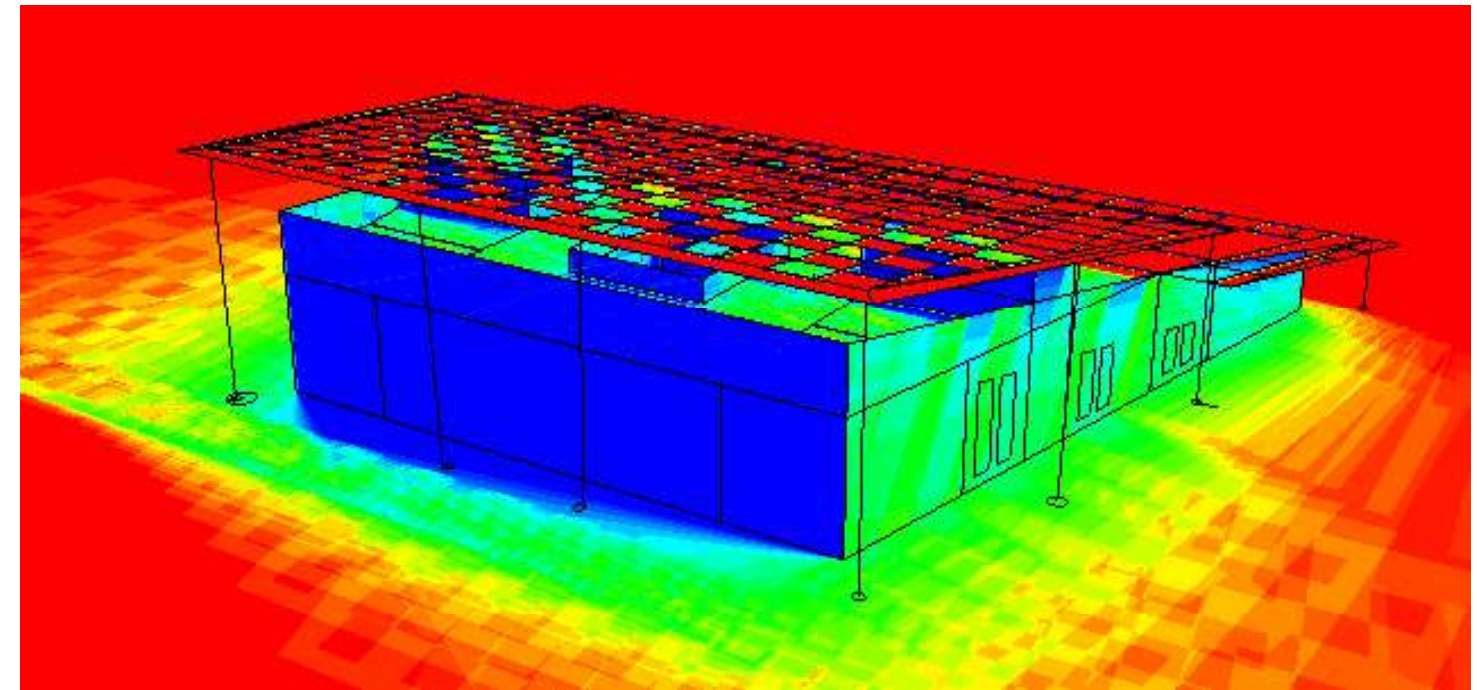
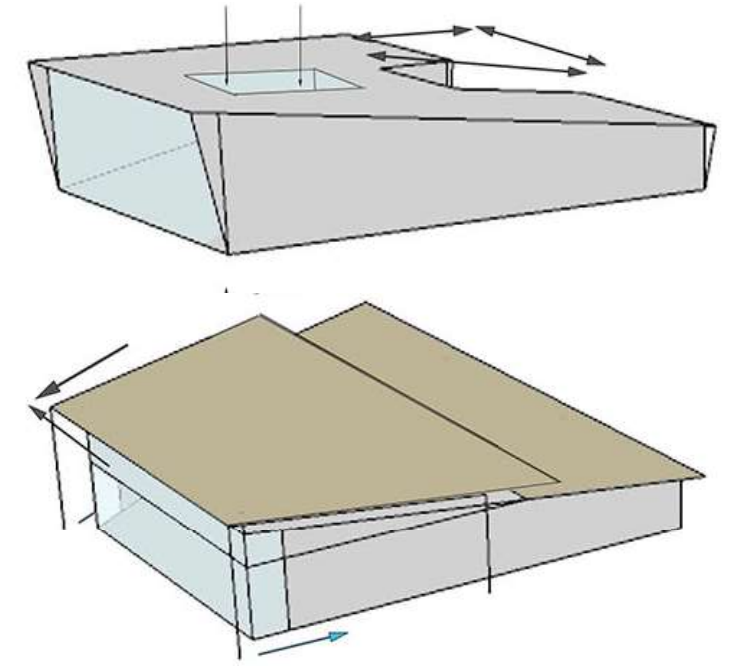
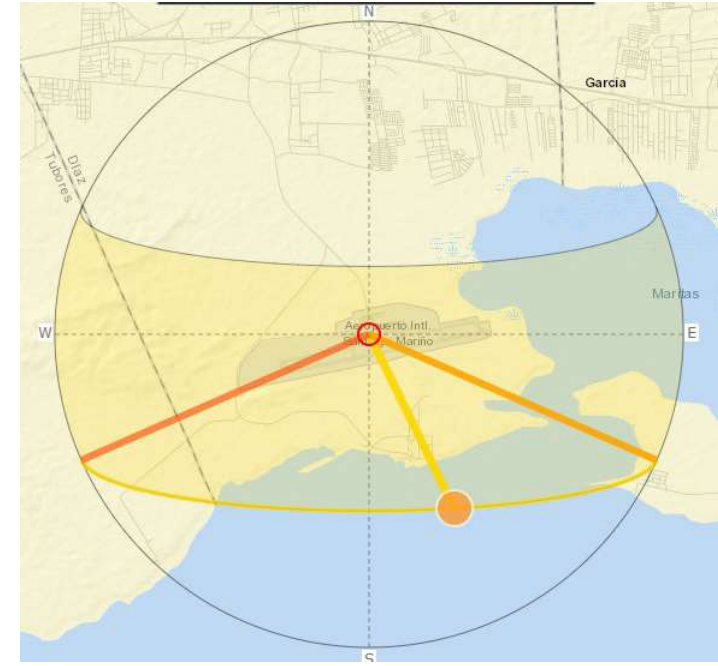
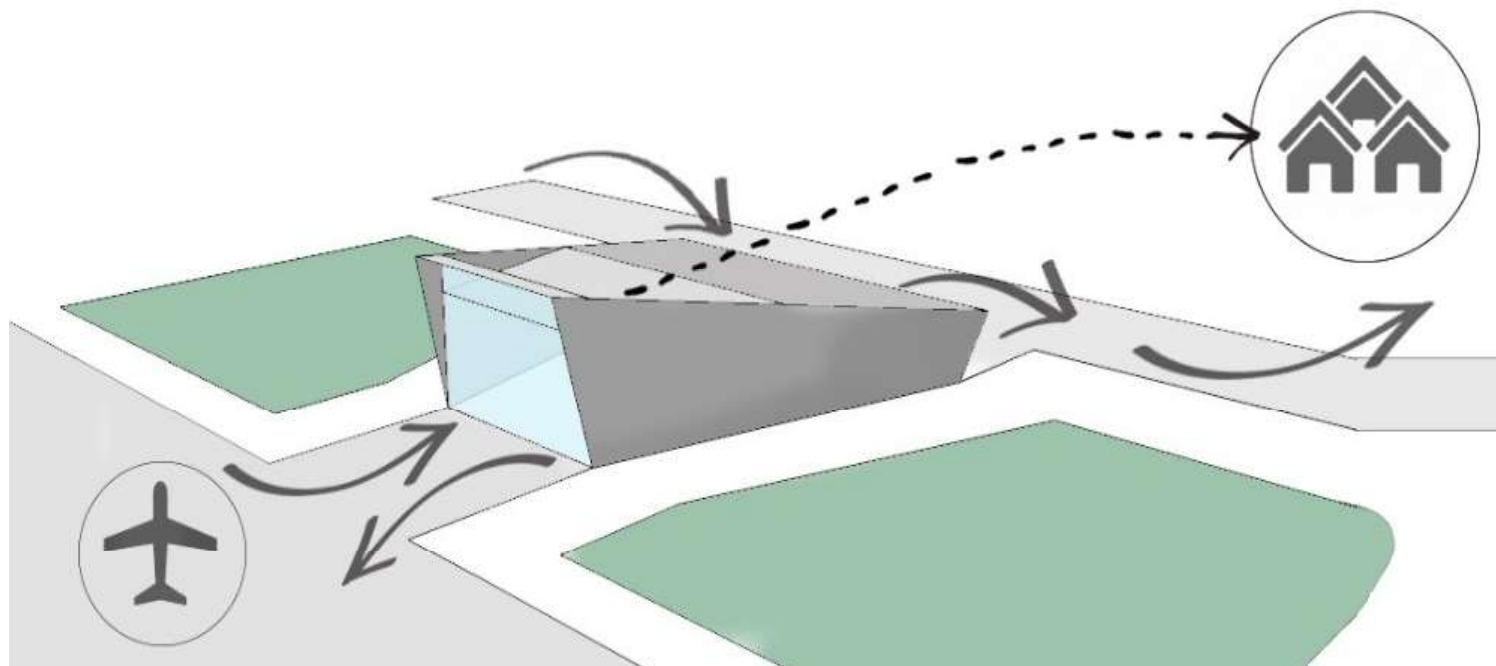
LANDSIDE: LOWER HEIGHT RECALLING THE LANDING

FRAMING THE VIEW FROM EACH FACADE

OUTDOOR SPACE ON THE ROOF:  
VISUAL CONNECTION TO THE CITY AND THE BEACH

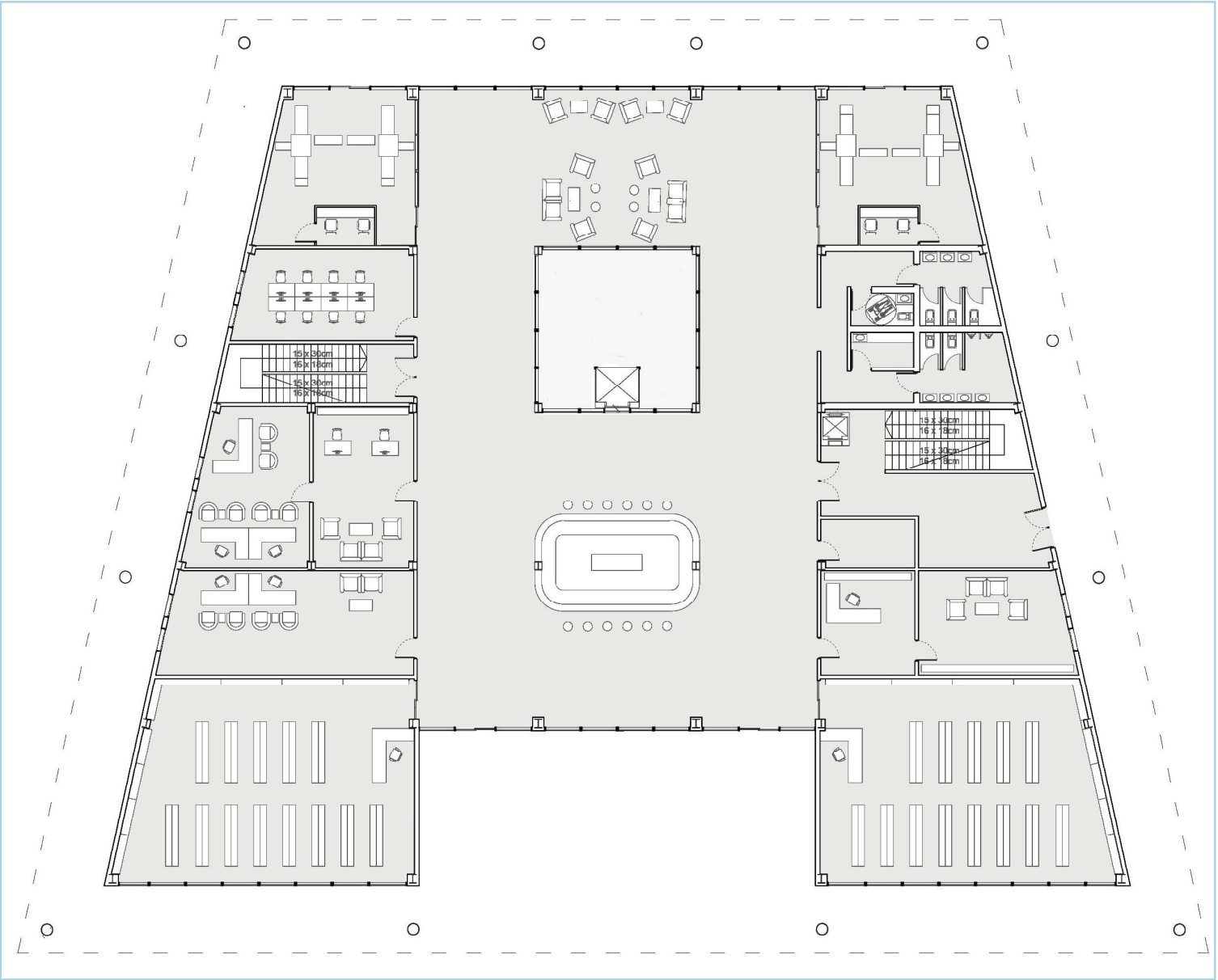
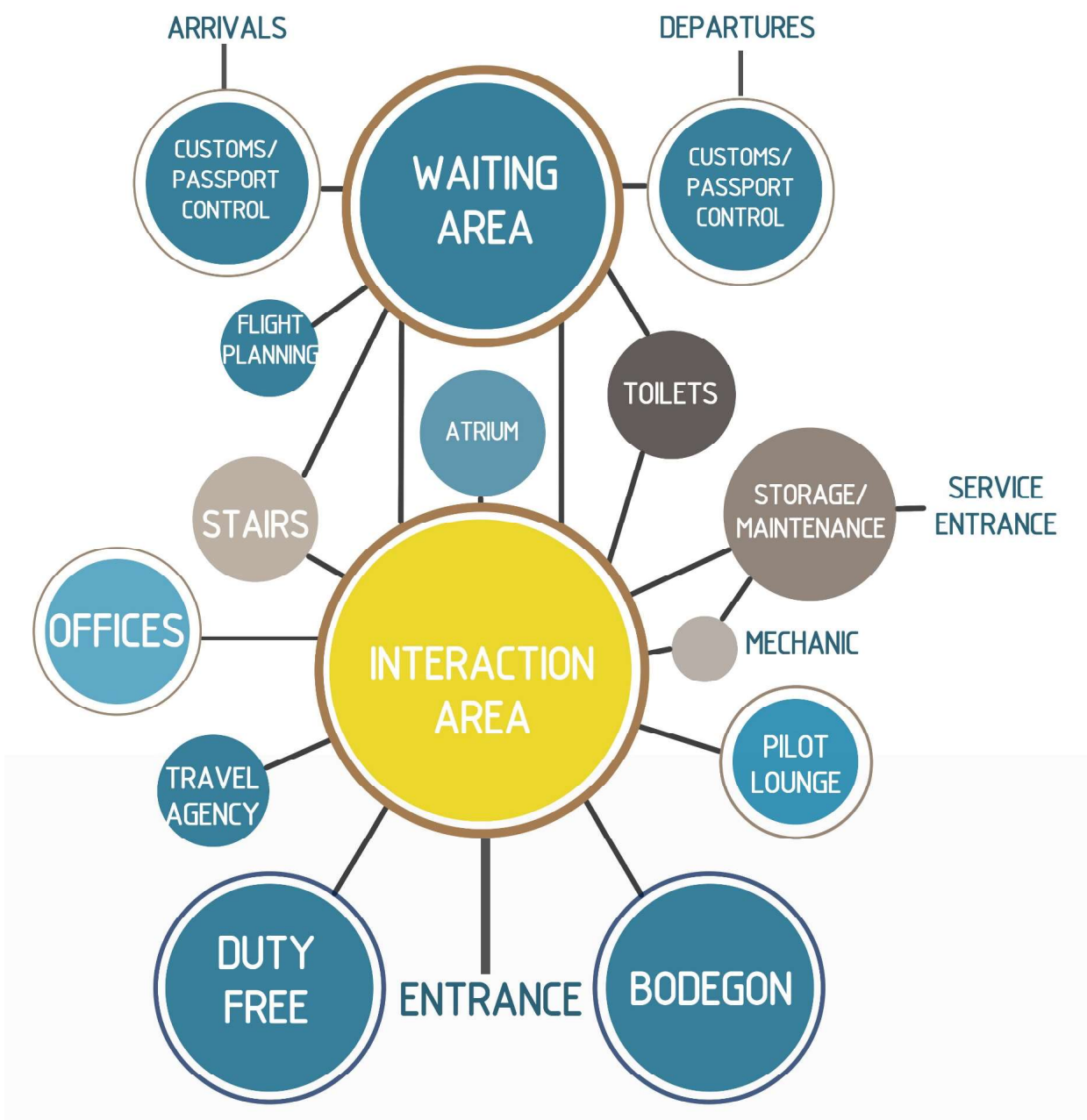
DESIGNING IN FUNCTION TO THE LATITUDE AND THE SOLAR INSIDENCE IN THE PLACE

- NATURAL VENTILATION
- SUN PROTECTION
- BETTER SPACE QUALITY





# FUNCTIONS AND DISTRIBUTION

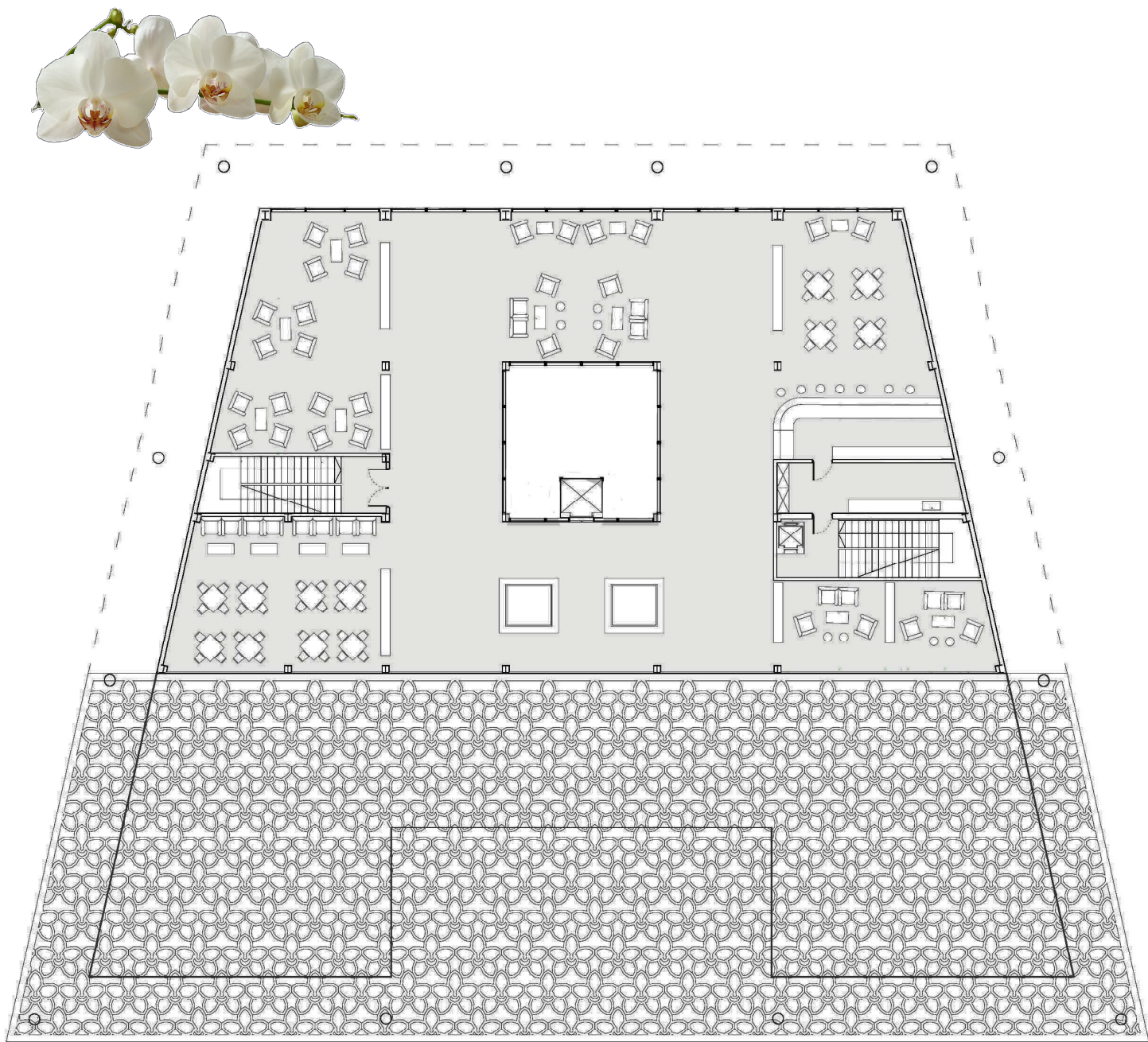


PB

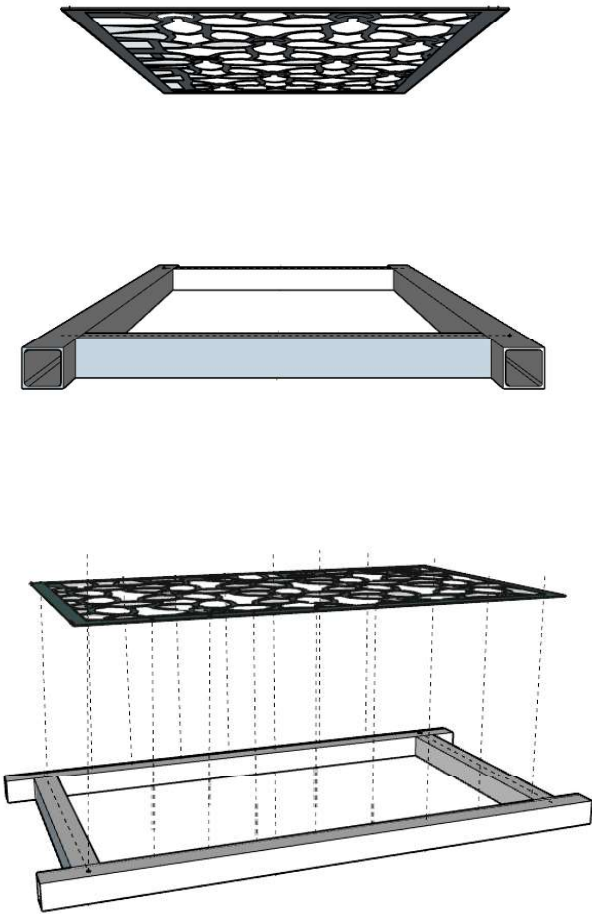
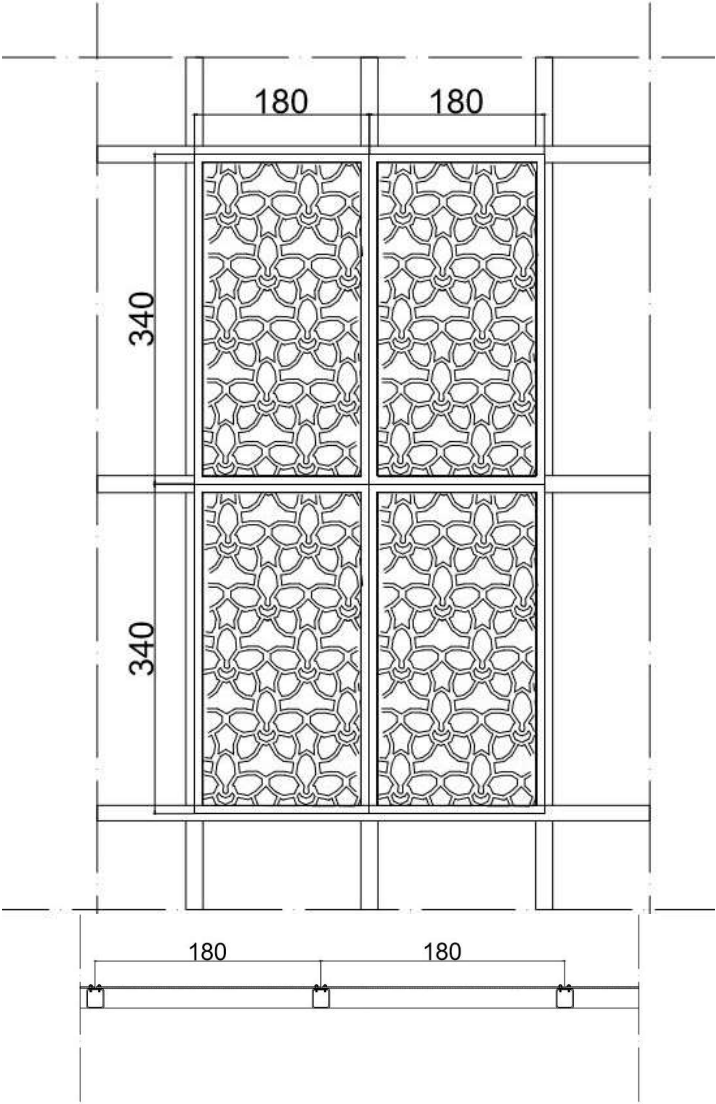




# ROOFTOP AND 5th FACADE

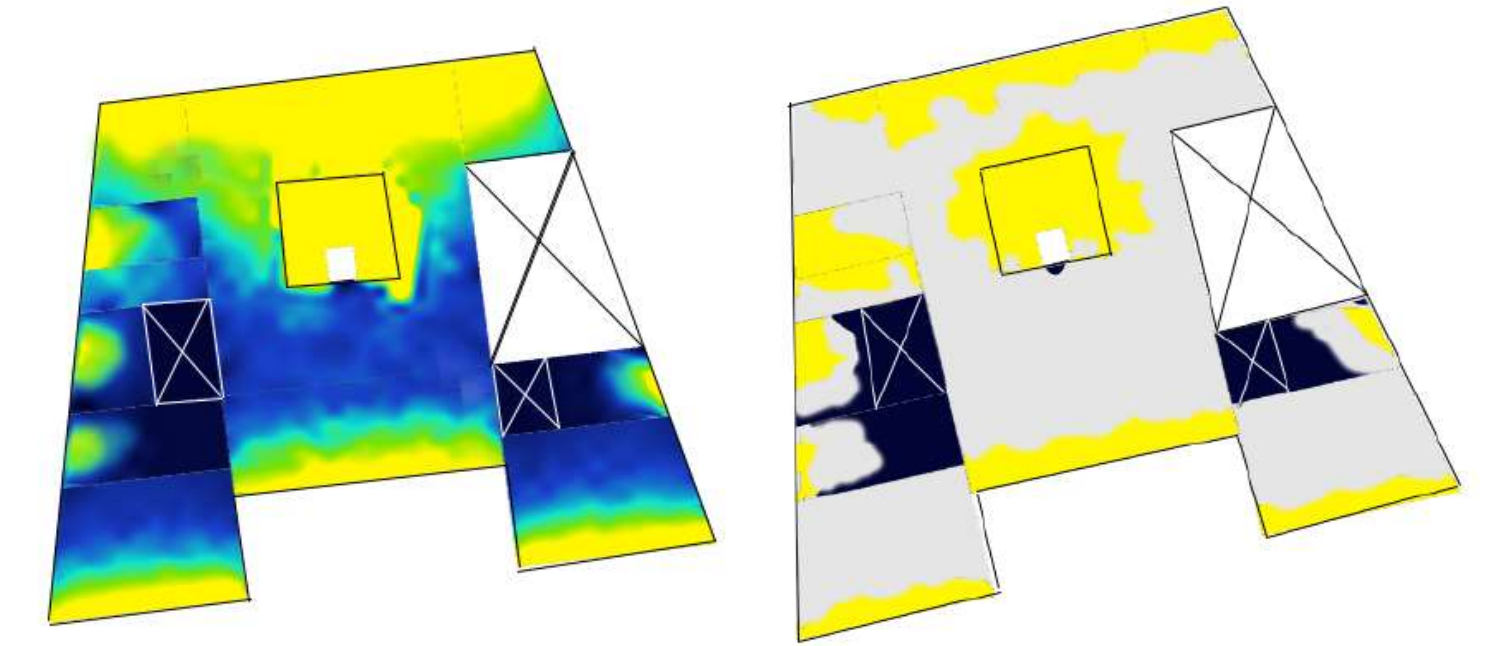


P1



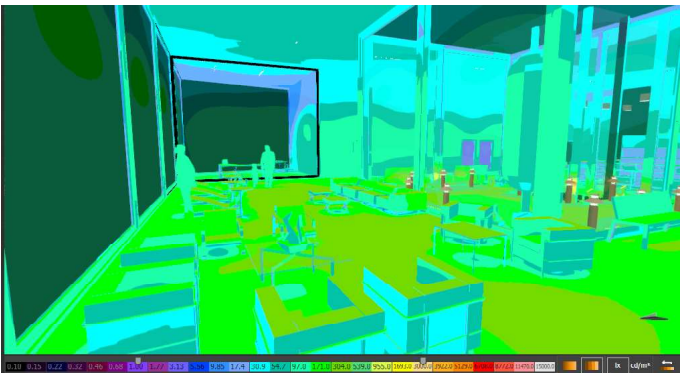
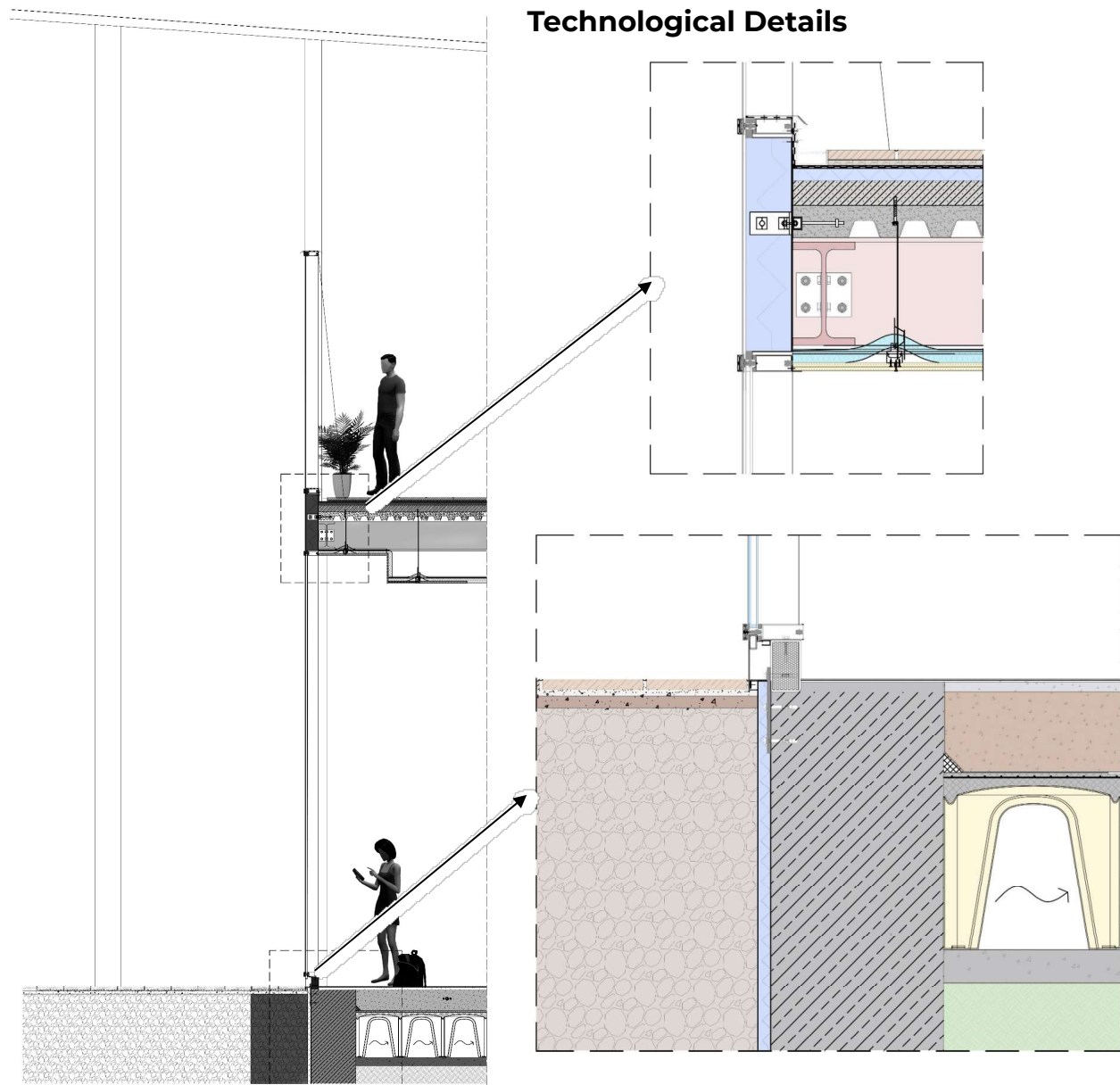


# ROOFTOP AND 5th FACADE



Daylight Factor 7%

sDA 4%



## Energy Efficiency

The project covers the energy consumption goals of the millenium. Where, the consumption of the building would be equivalent to its production. For this, passive and then active strategies were used.

